

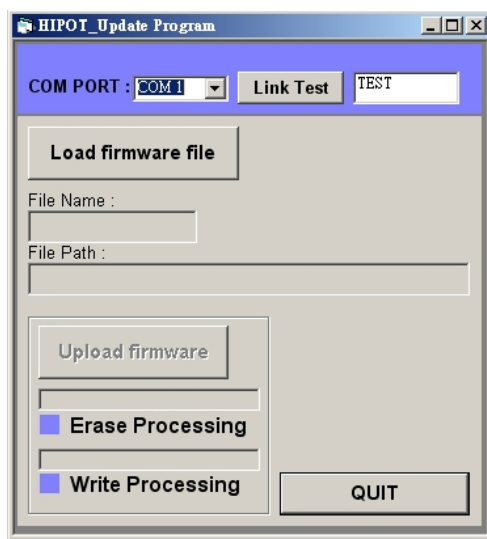
GPT-9000 Firmware Update Procedure

1. Connect the GPT and PC with an RS232C cable.
2. Press and hold the STOP button then turn the power on. (Note: The GPT display will become fuzzy-it is normal)



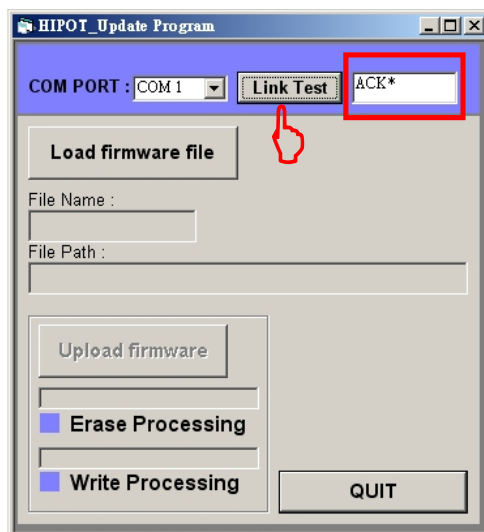
(Figure1 : Preparation)

3. Execute the “HIPOT_Program.exe” file in the Update Program folder.



(Figure2 : Open Update Program)

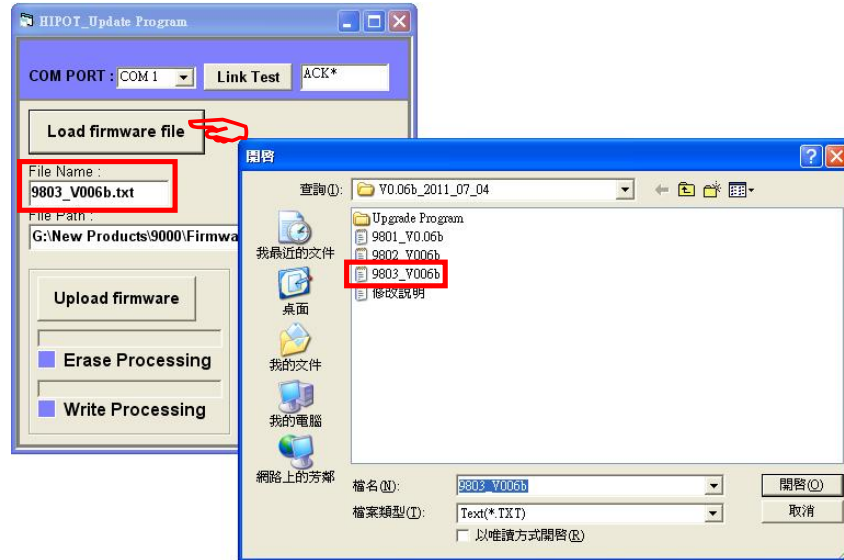
4. Press the “Link Test” button to make sure the connection is successful.
(Note: The message “ACK*” appears beside the Link Test button when the connection is successful; if not, check the COM PORT and try again)



(Figure3 : Link Confirmation)

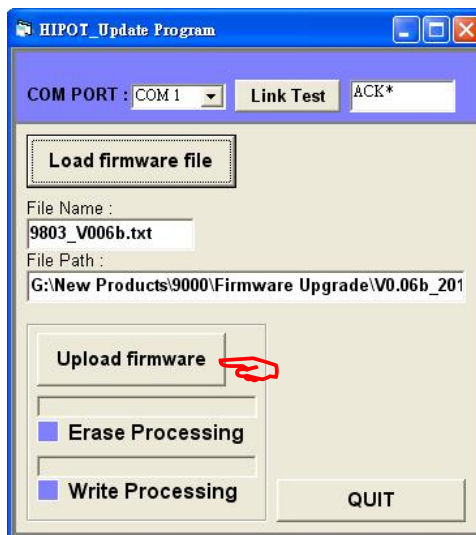
GPT-9000 Firmware Update Procedure

5. Press the “Load firmware file” button to select the firmware file.



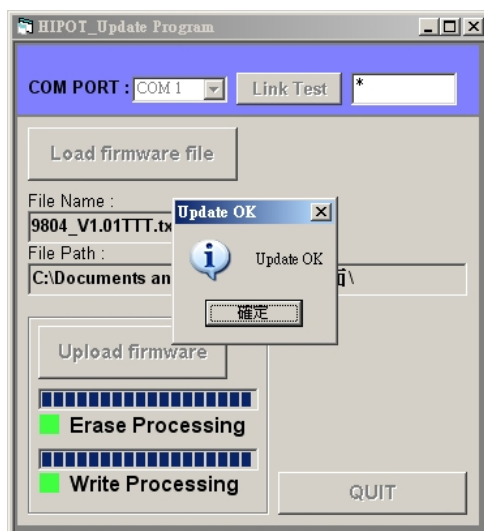
(Figure4 : Select Firmware File)

6. Press the “Upload Firmware” button to start uploading the firmware to the instrument.



(Figure5 : Upload Processing)

7. Wait 2~3 min for the firmware to upload. When the upload is complete, the “Update OK” message appears and the tester automatically turns on.



(Figure : Update Complete)