

# LCR Meter

LCR-8230/8220/8210/8205

---

## FIRMWARE UPDATE MANUAL

VERSION: 1.00



ISO-9001 CERTIFIED MANUFACTURER

**GW INSTEK**

This manual contains proprietary information, which is protected by copyrights. All rights are reserved. No part of this manual may be photocopied, reproduced or translated to another language without prior written consent of Good Will company.

The information in this manual was correct at the time of printing. However, Good Will continues to improve products and reserves the right to change specifications, equipment, and maintenance procedures at any time without notice.

**Good Will Instrument Co., Ltd.**

**No. 7-1, Jhongsing Rd., Tucheng Dist., New Taipei City 236, Taiwan.**

# Table of Contents

**I**NTRODUCTION .....4

    Requirements .....4

**F**IRMWARE UPDATE PROCEDURE .....5

    Flashing the Microcontroller .....5

# INTRODUCTION

The LCR-8200 Series LCR Meters have upgradable firmware to ensure your purchase has a long and useful life with updates and improvements.

There are four models in the LCR-8200 Series, all of which can be updated by using the same common firmware file.

## Requirements

---

- |          |   |
|----------|---|
| Hardware | <ul style="list-style-type: none"><li>• LCR-8230/8220/8210/8205</li><li>• USB Disk<br/>Type: Flash disk only<br/>Format: FAT32 / exFAT<br/>Max memory size: 128GB</li></ul> |
|----------|---|
- 

- |          |   |
|----------|---|
| Software | <ul style="list-style-type: none"><li>• Firmware: LCR8200.BIN</li></ul> |
|----------|---|
- 



Note

Contact your local distributor for latest firmware.


---

# FIRMWARE UPDATE PROCEDURE

## Flashing the Microcontroller

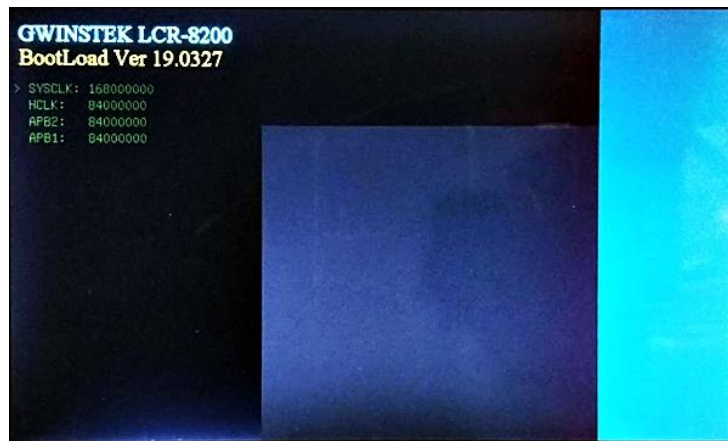
---

1. USB Disk
  1. A USB flash drive will be needed for the update procedure.
  2. Copy the new firmware file “LCR8200.BIN” to the :\\LCR8200\\BIN of the USB flash drive. If this path is not available, create it first.
2. Enter Boot loader Mode
  3. Make sure that the meter is powered off.
  4. Press and hold the first function button and then press the power button to turn on the LCR-8200 to enter the Bootloader environment as shown below.

 LCR8200.BIN   BIN 檔案   305 KB

---





3. Plug in the USB drive
5. Plug the USB drive that has the new firmware file into the front panel USB port on the LCR-8200.
6. The meter will show information of the USB drive.

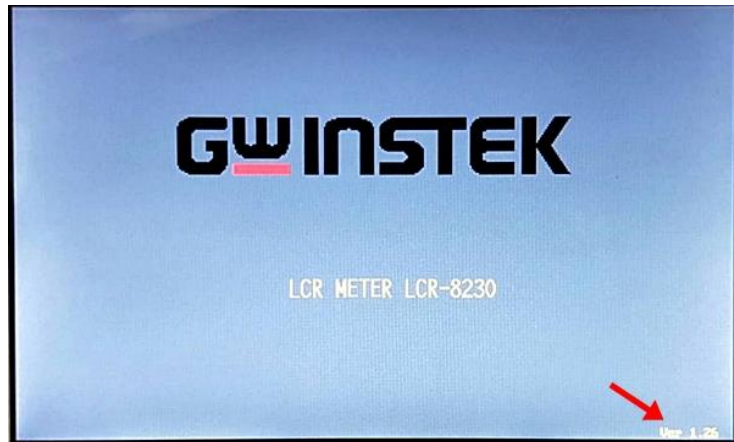


4. Flashing process
7. Press the first function button and start flashing the firmware. Do not turn the power off when the firmware is being flashed.
8. After the flashing process is done, it will show "Update completed" .



5. Update confirmation

9. When being rebooted, the meter will show the updated firmware version on its display for confirmation.



10. Alternatively, you can confirm whether the updated firmware version is correct by checking S/W Ver at SYSTEM CONFIG page.



11. The update procedure is complete.
12. If the update procedure fails, please repeat the update procedure again.